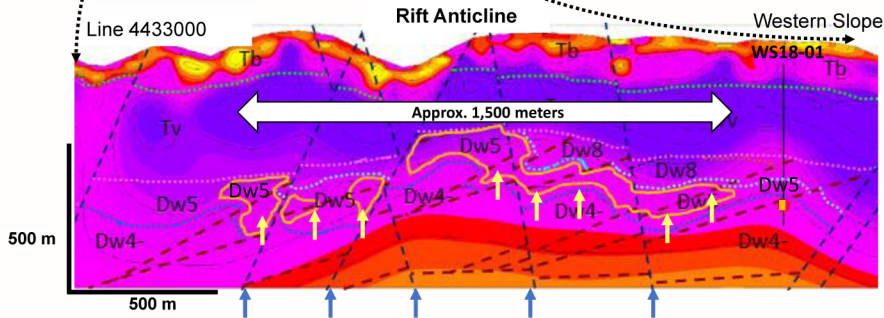
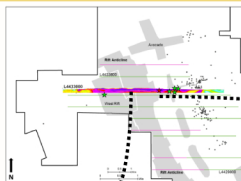


**CSAMT lines indicate ~ 90-meter thickness and ~1,500-meter width of favorable Wenban5 in Rift Anticline.**



**The Rift Anticline has five distinct high-angle faults (blue arrows) with a swarm of low-angle thrust faults (yellow arrows) intersecting them within the Wenban5 axial crest (yellow outline).**

