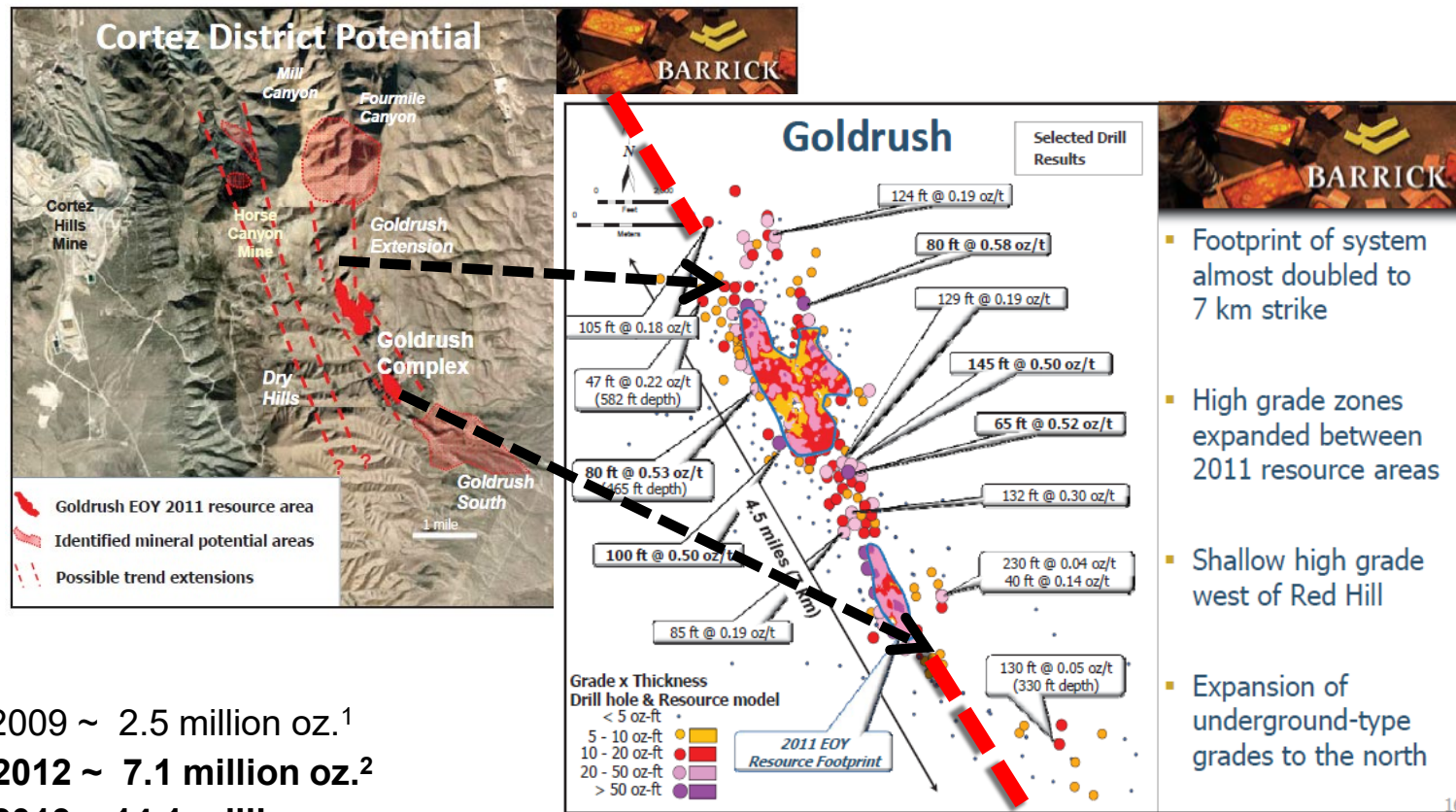


“...From a ‘typical’ Carlin to an “elephant” in two short years...”



As of:

- Jan 2009 ~ 2.5 million oz.¹
- Jan 2012 ~ 7.1 million oz.²
- Jan 2013 ~ 14.1 million oz.
- Jan 2014 ~ 15 to 20+ million oz.³
- Jan 2016 ~ 10 million oz @ 10 g/t⁴
- Jan 2020 ~ production @ ~ 500,000 oz/yr.

¹ Drilling suspended after crash of 2008.
² Drilling recommenced 2011.
³ Estimates of global resources ran from 15 million to 20 million plus @ ~4 g/t for open pit.
⁴ Goldrush strategically recategorized as underground resources.

