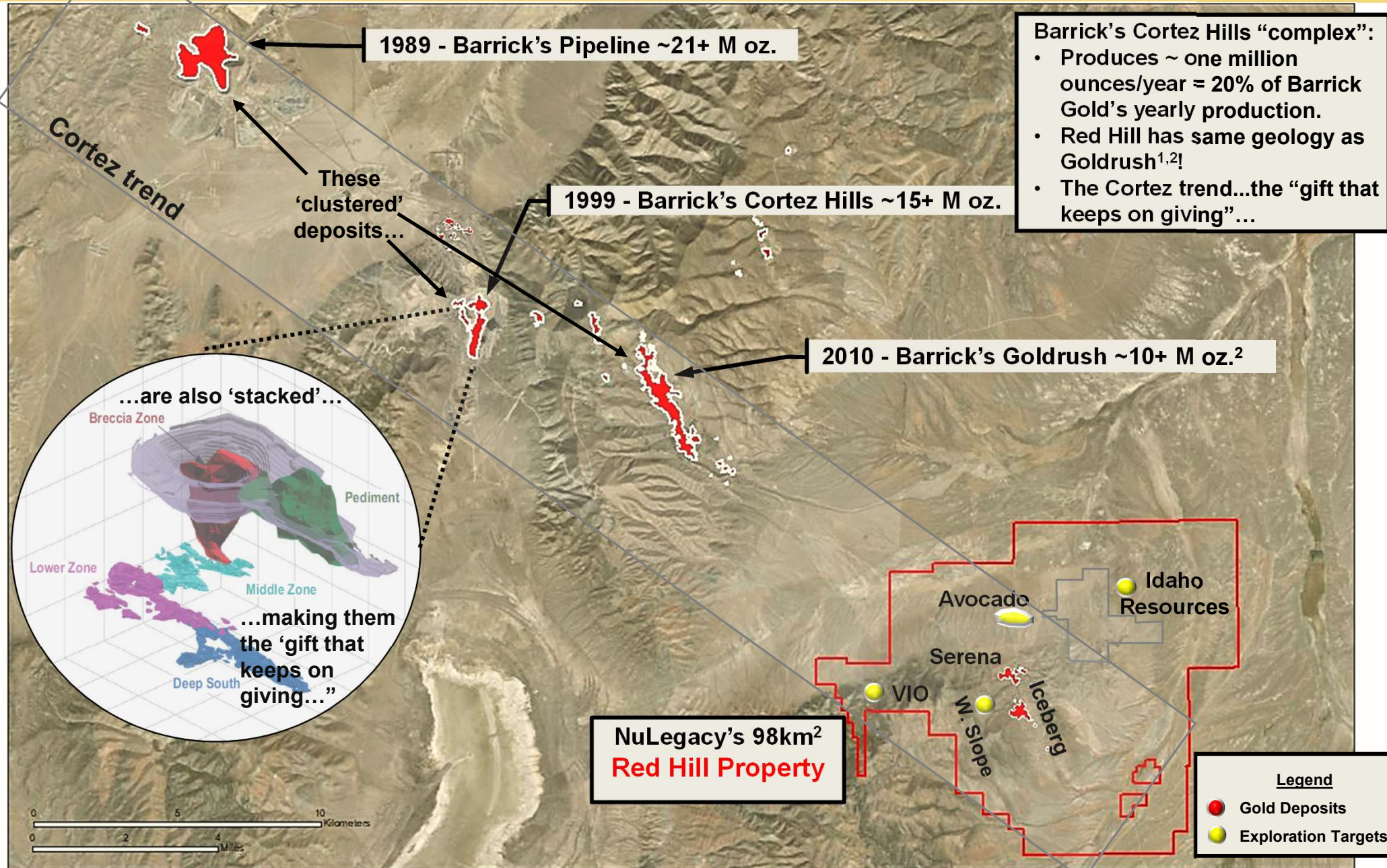


Cortez trend

Clusters of Carlin-Type and Epithermal gold deposits



Barrick's Cortez Hills "complex":

- Produces ~ one million ounces/year = 20% of Barrick Gold's yearly production.
- Red Hill has same geology as Goldrush^{1,2}!
- The Cortez trend...the "gift that keeps on giving"...

...are also 'stacked'...

...making them the 'gift that keeps on giving...'

